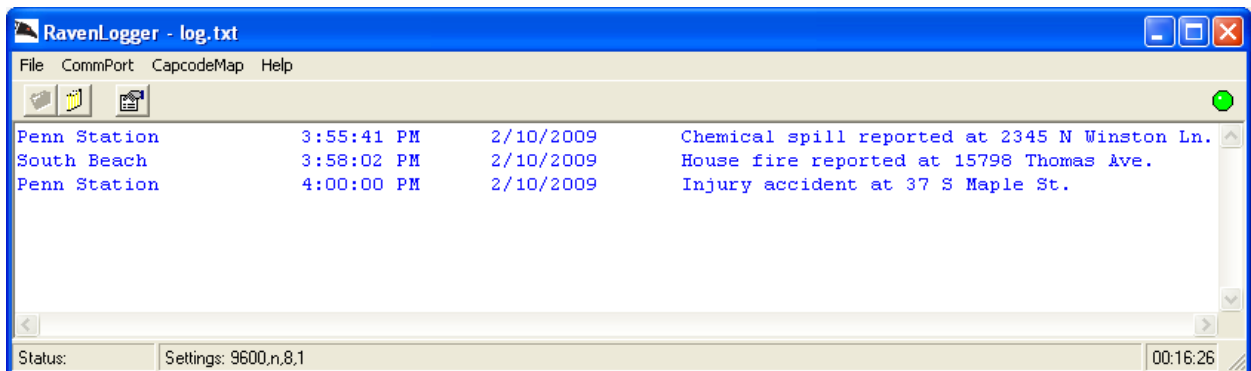


RAVEN Logger Software



Raven's PC compatible logging software allows facilities to track and store messages sent over their paging network. Received messages are automatically displayed in the program window and simultaneously stored to a Microsoft Excel compatible file for later distribution and analysis.

Raven's logging software stores the message text, the time the message is received, and the message's destination. Messages are stored for long term analysis using a Microsoft Excel compatible file format, making message retrieval and analysis intuitive, while minimizing the operator training.

Using the familiar Excel format, administrators can easily store, search, and organize messages sent out over their paging network.

Raven's logging software provides the ideal solution for tracking message traffic, providing facilities with usage data, liability coverage, and a current view of activity over a paging network.